

SINTEF Technical Approval

TG 20654

Issued first time: 22.01.2021
Revised: 17.06.2026
Amended:
Valid until 01.07.2031
Provided listed on
www.sintefcertification.no

SINTEF confirms that

Riwega Tape 1 PE

has been found to be fit for use in Norway and to meet the provisions regarding product documentation given in the regulation relating to the marketing of products for construction works (DOK) and regulations on technical requirements for building works (TEK), with the properties, fields of application and conditions for use as stated in this document



1. Holder of the approval

Riwega Srl
Via Isola di Sopra, 28
I-39044 Egna (BZ)
Italy
www.riwega.com

2. Product description

Riwega Tape 1 PE has a blue backing of LDPE film with white printing and polyacrylate adhesive with a polyester mesh reinforcement. The tape is delivered on rolls with a length of 25 m and a width of 50 mm, 60 mm, 100 mm, 150 mm and 200 mm. The tape with a width of 100 mm has a 50/50 split in the protective paper.

3. Fields of application

Riwega Tape 1 PE is used for sealing joints, penetrations and rifts in Riwega USB Classic. It can also be used to seal joints and penetrations in asphalt impregnated fibre board primed with USB Primer and joints and penetrations in GU/GUX gypsum boards provided that the tape adheres well when applied to the gypsum board.

Riwega Tape 1 PE can be used to seal joints, penetrations and for reparations of PE foil in the water vapour layer, and for temporary fastening of PE foils used in outdoor roof constructions.

4. Product performance

Adhesion

Riwega Tape 1 PE has satisfactory adhesion to Riwega USB Classic and the surface of painted and untreated wood, galvanized and stainless steel, painted and anodized aluminium, PVC, water vapour barrier of PE-foil, asphalt impregnated fibre board primed with USB Primer and GU/GUX gypsum board.

Safety in case of fire

Riwega Tape 1 PE has not been classified according to EN 13501-1.

Durability

Riwega Tape 1 PE is considered to have satisfactory durability based on results from testing of adhesive properties as well as tensile strength and elongation before and after artificial ageing in the laboratory.

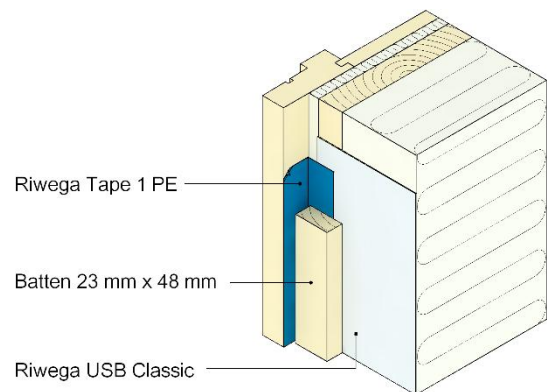


Fig. 1
Example of use of Riwega Tape 1 PE to seal joint between Riwega USB Classic and window frame.

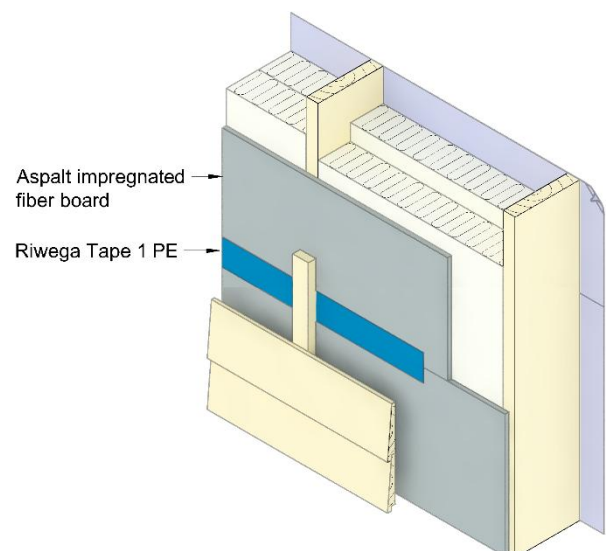


Fig. 2
Example of use of Riwega Tape 1 PE to seal joint between asphalt impregnated fibre boards.

SINTEF is the Norwegian member of European Organisation for Technical Assessment, EOTA, and European Union of Agrément, UEAtc

Artificial ageing has been performed with 14 days exposure in a climate simulator (NT Build 495) followed by 24 weeks (168 days) of aging in a heat chamber at 70 °C (EN 1296), and also for 48 hours exposure to UV-radiation without water spraying according to EN 1297 followed by exposure to elevated temperature for 12 weeks at +70 °C according to EN 1296.

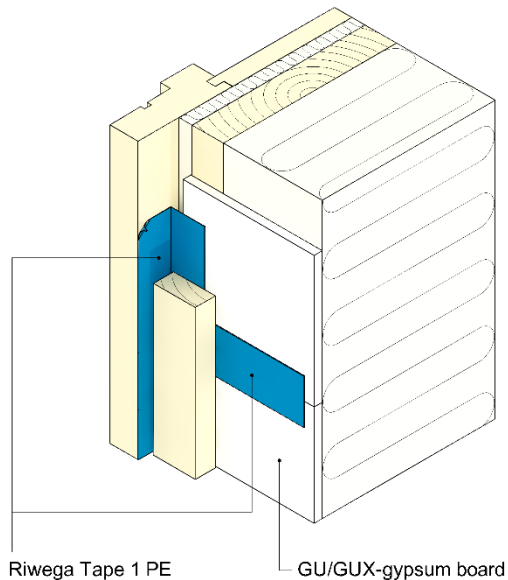


Fig. 3

Example of use of Riwega Tape 1 PE to seal joints between GU/GUX gypsum boards and between GU/GUX gypsum board and window frame.

5. Environmental aspects

Substances hazardous to health and environment

Riwega Tape 1 PE contains no hazardous substances with priority in quantities that pose any increased risk for human health and environment. Chemicals with priority include CMR, PBT or vPvB substances.

Waste treatment/recycling

The product shall be sorted as residual waste. The product shall be delivered to an authorized waste treatment plant for energy recovery.

6. Conditions of use

Design considerations

Riwega Tape 1 PE should only be used on substrates where the adhesion properties are documented with satisfactory results.

Installation

All surfaces of the substrates must be dry, clean and free of dust, oil and grease prior to application of Riwega Tape 1 PE.

There must be no tension in the adhesive surface after assembly. The tapes cannot be used to joint subjects where the adhesive surface is exposed to continuous strain.

Asphalt impregnated fibre board must be primed with USB Primer before joints and penetrations is sealed with Riwega Tape 1 PE.

Used as temporary fastening of water vapour barrier PE foil in roofs in outdoor environment, Riwega Tape 1 PE must be protected from direct exposure to UV radiation in the finished construction. The tape should, without unnecessary delay, be covered as soon as possible after installation.

Transport and storage

Riwega Tape 1 PE shall be stored between 18 °C and 25 °C, dry and protected from UV rays.

7. Product and factory production control

Riwega Tape 1 PE is produced in Germany for Riwega Srl.

The holder of the approval is responsible for maintaining the factory production control to ensure that “the product” is manufactured in compliance with the preconditions upon which this approval is based.

The manufacturing of the product(s) and the manufacturer's system for factory production control (FPC) is subject to continuous surveillance in accordance with the contract regarding SINTEF Technical Approval.

The manufacturer has a quality management system that is certified pursuant to EN ISO 9001.

8. Basis for the approval

The product's characteristics are documented in reports issued by independent bodies. The technical documentation serves as the basis for SINTEF's product assessment with respect to the guidelines for SINTEF Technical Approval, and recommendations as outlined in SINTEF Building Research Design Guides.

9. Marking

The product name and the web address of the approval holder is printed on the backing of each roll. Each packaging unit of Riwega Tape 1 PE is marked with product name, owner of the approval and charge number.

The approval mark for SINTEF Technical Approval TG 20654 may also be used.

10. Liability

The holder/manufacturer has sole product liability according to current law. Claims can only be made against SINTEF under general law or other special grounds.

for SINTEF

Hans Boye Skogstad
Approval Manager